



**Breakaway
Research**

December 2015

Grant Craighead | Research Manager
gcraighead@breakawayinvestmentgroup.com

Mark Gordon | Senior Research Analyst
mgordon@breakawayresearch.com

www.breakawayresearch.com

Company Information

| ASX Code | ARM |
|-------------------------------|------------------|
| Share Price (14 Dec 2015) | A\$0.026 |
| Ord Shares | 116.8m |
| Options | 5.75m |
| Market Cap (undiluted) | A\$3.04m |
| Cash (est. 14 Dec 2015) | A\$3.50m |
| Listed Investments | A\$3.26m |
| Loans to associates | A\$0.50m |
| Enterprise Value | -A\$4.22m |

Directors & Management

| | |
|-------------------|-----------------|
| Non-Exec Chairman | Phillip Jackson |
| Managing Director | Martin Pyle |
| Non-Exec Director | Peter Cordin |
| Non-Exec Director | Tim Markwell |

Company Details

| | |
|---------|--|
| Address | 20 Kings Park Road West Perth WA 6005 |
| Phone | +618 6143 1840 |
| Web | www.auroraminerals.com |

Top Five Shareholders

| | |
|-------------------------|--------|
| Lion Selection | 12.82% |
| Forsyth Barr Custodians | 11.18% |
| HSBC Custody Nominees | 6.92% |
| Jetosea Pty Ltd | 4.84% |
| Martin Pyle | 3.03% |
| Top 20 | 57.53% |
| Directors | ~4% |

1 Year Price Chart



Source: IRESS

Aurora Minerals (ARM)

Leveraged to Results

Recommendation: Speculative BUY

Key Points

- **Investments in ASX-listed junior exploration companies**
- **Trading at a ~58% discount to NTA**
- **Associate companies have quality exploration ground and control over the highly prospective Samira Hill Greenstone Belt in Burkina Faso**
- **Burkina Faso properties include a 184,000oz JORC-compliant gold Resource**
- **High potential for the delineation of additional resources in Burkina Faso**
- **Growing presence in Cote D'Ivoire, with very encouraging results to date**
- **Exploration for a number of minerals in South Korea through Peninsula Mines**
- **Strong estimated current cash position of ~\$3.5 million**

Aurora has investments in companies operating in Burkina Faso, Cote D'Ivoire and South Korea, with exploration activities returning very encouraging results.

In Burkina Faso, where the group controls the Samira Hill Greenstone Belt, Predictive Discovery has defined a 184,000oz gold Resource and 460,000 to 563,000oz gold Exploration Target and Golden Rim a 500,000oz to 611,000oz gold Exploration Target. In addition Predictive Discovery is growing its presence in the highly prospective greenstone belts of Cote D'Ivoire.

Exposure to South Korea is via the 35.8% stake in Peninsula Mines (ASX: PSM), which has properties over historical mining areas, and a strong relationship with KORES, the state mining and investment agency.

The value of Aurora's investments and cash is \$0.062/share – the current share price of \$0.026 is at a 58% discount to this, and is also at a 13% discount to cash backing of \$0.030/share.

We rate Aurora as a SPECULATIVE BUY, with key price movers including exploration success by its associates.

Company Overview

Aurora Minerals Limited is a Perth based ASX-listed junior exploration company with a strategy of growth through direct investments in other ASX-listed junior exploration companies. As part of the strategy Aurora also facilitates funding via loans to associates.

Investments to date include Predictive Discovery (ASX: PDI, 43.9%), Golden Rim Resources (ASX: GMR, 13.4%) and Peninsula Mines (ASX: PSM, 35.8% and a ~\$500K loan).



Investment Thesis

Aurora currently has a strategy of investing in ASX listed junior explorers

Portfolio Investment Approach

Aurora Minerals Limited (ASX: ARM, “Aurora” or “the Company”) has undertaken a strategy of investing in ASX listed junior exploration companies to gain leveraged exposure to prospective exploration projects. This allows the Company to benefit from the substantial cost of previous work completed (>\$50 million in the case of current investments), established field teams and in country expertise and the ability to invest at bottom of the cycle values.

Three key investments to date

Three Key Investments to Date

To date, Aurora has invested in three companies, Golden Rim Resources (ASX: GMR, “Golden Rim”, 13.4%), Predictive Discovery Limited (ASX: PDI, “Predictive”, 43.9%) and Peninsula Mines Limited (ASX: PSM, “Peninsula”, 35.8%), and having effective control of Predictive and Peninsula, including board representation.

Between them Predictive and Golden Rim control the prospective Samira Hill Greenstone Belt in eastern Burkina Faso, which has excellent exploration potential

Quality Burkina Faso Exploration Ground

Between them, Predictive and Golden Rim control most of the Samira Hill Greenstone Belt in eastern Burkina Faso. The ~1,700km² tenement package is along strike from the +2Moz Samira Hill Mine in neighbouring Niger.

The companies have defined significant gold mineralisation, with this to be followed up in the upcoming field season

Excellent Exploration Potential

The Samira Hill belt has excellent exploration potential, with results of work to date by both companies supporting this.

Growing Gold Inventory

Predictive has an 184,000oz, 2.58g/t Indicated and Inferred Resource at its Bongou prospect within the 95-100% held Bonsiega Project. Within 10 kilometres of the Bongou resource Predictive has recently reported an Exploration Target of 460,000 to 563,000oz at between 1.5 and 1.7g/t gold.

Golden Rim has reported an Exploration Target of 500,000 to 611,000oz at between 1.8 and 2.2g/t gold within its 90% held Korongou permit, some 40km from Bongou.

Active Programmes Planned

Both companies have active programmes planned for the 2015/2016 field season which started in October, and we expect continuing news flow and positive results.

There are good arguments for the consolidation of the activities of Predictive and Golden Rim

Synergies and Consolidation?

Given their proximity to each other, there are natural synergies in any potential consolidation of the activities of Predictive and Golden Rim. Such synergies should lead to a reduction of overheads in-country, with both companies now concentrating exploration activities on this belt.

Also, given that both companies have identified either Resources or Exploration Targets in their respective tenements, a consolidation of activities could also lead to a higher probability of an initial Resource being estimated that would meet our hurdle of at least 1 to 1.5 million ounces that we believe needs to be delineated to consider a stand-alone



development opportunity.

Growing Focus on Cote D'Ivoire

Prospective projects in South Korea

Predictive is also building a strong position in the Cote D'Ivoire, recently announcing an agreement to fund and manage exploration over a package of three highly prospective tenements. In addition it has a JV in place with London based Toro Gold Limited ("Toro"), which is initially earning up to 51% in three tenements, with soil sampling and trenching generating large gold anomalies.

Positive Results From South Korea

Trading at a significant discount to NTA

The third investment is a 35.8% controlling stake in Peninsula, which has two projects in South Korea. The main focus to date has been on the 100% owned, historically mined Daewha Mo/W Project, with drilling intersecting narrow high grade molybdenum and tungsten veins. Sampling of polymetallic veins at the second project, Osu, has returned high grade assay values, with a conceptual blind porphyry target also being defined.

Trading at a Significant Discount to NTA

The net tangible asset ("NTA") valuation for Aurora is \$0.062/share, with the current share price being at a 58% discount to this. The share price is also at a 13% discount to the cash backing of \$0.030/share.

The following table summarises the investments, as well as the structure of the associated companies. This includes both tranches of the current raising and debt conversion by Peninsula (although the shares are yet to be issued, but have been approved by shareholders), and includes the recent Predictive rights issue.

Aurora asset valuation and associated company structure

| Asset | Code | On issue/ cap | Current price | Est. Cash \$m | ARM Interest | Asset Value | Value /Share |
|--|------|-------------------|------------------|------------------|-----------------|-----------------|-----------------|
| Golden Rim | GMR | 1,438m \$4.32m | \$0.003 | ~\$4.250 | 13.44% | \$580k | \$0.005 |
| Predictive Discovery | PDI | 1,301m \$3.90m | \$0.003 | ~\$1.100 | 43.92% | \$1,714k | \$0.015 |
| Peninsula Mines | PSM | 300m \$2.70m | \$0.009 | ~\$0.300 | 35.76% | \$967k | \$0.008 |
| Total Listed Investments | | | | | | \$3,261k | \$0.028 |
| Loan to Peninsula | | | | | | \$500k | \$0.004 |
| Cash | | | | | | \$3,500k | \$0.030 |
| NTA | | | | | | \$7,261k | \$0.062 |
| Market discount to NTA – Share price of \$0.026 | | | | | | | 59% |

Source: Aurora, Breakaway analysis (may contain rounding errors)

Experienced Board

Experienced board, supportive shareholders

The board of Aurora have extensive experience in the finance and junior resources industries in both technical and financial capacities. In addition Aurora board members have seats on both Predictive and Peninsula boards, including the Executive Director role for Peninsula.

Supportive Shareholders

Companies within the group have supportive major shareholders, including Lion Selection in the case of Aurora, and Sprott Asset Management and Acorn Capital in the case of Golden Rim.



Risks

Risks pertinent to Aurora and associated companies are presented below.

- **Exploration** – As for any junior explorer, this is the key risk directly influencing the associate companies, and indirectly for Aurora. However results to date, especially in Burkina Faso, have been very encouraging, thus partly mitigating this.
- **Markets and Funding** – Predictive has recently raised ~\$1.3 million through a fully subscribed rights issue, and in the Company's view largely meeting expected outgoings for the next 18 months and somewhat mitigating short term funding risk. However Predictive will need to provide or arrange further funds within six months to meet the requirements of the XMI agreement in Cote D'Ivoire. Peninsula's requirements are somewhat less, partly through the drilling support from KORES, and working capital requirements are currently being funded through a loan agreement with Aurora. Peninsula is also in the process of completing a two tranche placement and debt conversion issue to raise \$305,000 including the conversion of \$141,500 of its debt with Aurora to stock.
- **Sovereign Risk** – All key jurisdictions, Burkina Faso, Cote D'Ivoire and South Korea, are relatively stable and mining friendly. In the case of Burkina Faso it appears to have settled down following the recent unsuccessful coup attempt. Presidential elections were recently held with a decisive vote electing a new President with international observers declaring the elections free and fair and a great precedent for democracy in West Africa. Recent years have seen the rapid rise in mining and exploration activity in Burkina Faso, with several multi-million ounce gold deposits now up and running (reportedly including eight being developed in the last six years) – 2014 production was some 1.2Moz, accounting for around 20% of the country's GDP.



Project and Activities Review

Introduction

Aurora has undertaken a strategy of investing in ASX listed junior exploration companies. The aim of this strategy is to benefit from:

Aurora currently has a strategy of investing in ASX listed junior explorers

- Substantial exploration and set-up costs already incurred on the projects – in the case of the current investments this is greater than \$50 million
- Established on the ground technical teams with in-country experience
- Opportunistic timing - being able to invest into quality companies at or near low, bottom of the cycle values and at a fraction of the cost of replicating the work already done.

To date, Aurora has invested in three companies, Golden Rim Resources, Predictive Discovery and Peninsula Mines. The Company has effective control of the latter two, including board representation. Golden Rim and Predictive are carrying out gold exploration in Burkina Faso, with Predictive also exploring in Cote D'Ivoire. Peninsula has various exploration properties in South Korea.

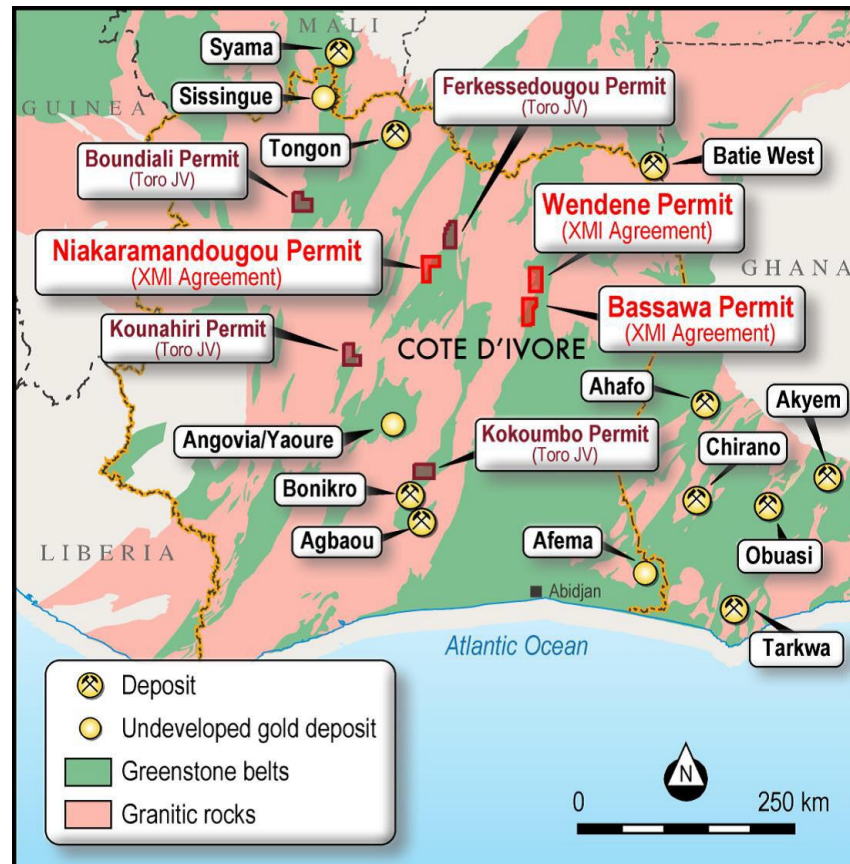
Given Aurora's cash position, there is also the potential for investments in other opportunities that may come along.

Cote D'Ivoire – Predictive Discovery

Predictive has interests in two groups of tenements in Cote D'Ivoire – the Toro JV and the XMI Agreement tenements as shown in the figure below.

Burkina Faso tenements

Predictive has interests in 2,732km² of tenements and applications in Cote D'Ivoire



Source: Aurora Minerals



This includes an earn-in with Toro, whereby Toro can initially earn 51% of a four tenement package

The Toro JV includes four granted tenements totalling 1,533km², which are held through Predictive's subsidiary PDI Cote D'Ivoire SARL ("PDIC"). Three of these are held 100%, with one, Kokoumbo, subject to an earnin whereby PDIC can earn up to 90% from Ivoro Negoce, an Ivorian company. Predictive originally picked up the ground in 2013, with the Toro JV announced on October 22, 2014.

Toro, a UK based company with substantial institutional shareholders including RCF, Macquarie, African Lion and Sprott is in turn initially earning 51% of PDIC through the expenditure of US\$1 million on the four tenements. Upon Toro reaching a 51% interest, Predictive may elect to contribute 49% of expenditure, else dilute. Whereby Toro can earn an extra 14% through the expenditure of an additional \$US2.5 million.

The XMI agreement, announced to the market on October 28, 2015, covers one granted tenement (Bassawa) and two applications (Niakamandougou and Wendene) for 1,199km², with Bassawa and Wendene termed the Bobosso Project. The agreement, to earn equity through funding and managing exploration programmes, is with an Ivorian Company XMI SARL ("XMI"), and is contingent on the Wendene tenement being granted. Other terms include:

- Equity in the project will be earned through a holding company in the UK - Exploration and Mining Investments Limited ("EMIL").
- On grant of Wendene, PDI will invest £27,000 (Approximately A\$58,000) into EMIL and obtain 15% of that company.
- PDI will have an exclusive right for six months to raise capital to progress the project. This capital may be provided in part or in whole by PDI or third party investors arranged by PDI.
- Subject to completion of a successful initial capital raising of at least £500,000 within 6 months of the grant of Wendene, Predictive will have the first right of refusal to raise funds into EMIL for two years from the date of grant.
- Predictive's team will manage exploration of the project.

Recent agreement whereby Predictive will fund exploration over the tenements in an arrangement with a local group

This gives Predictive the flexibility to allow investment at either the project or parent company level, and also maximises Predictive's ability to maintain control of EMIL.

Geology and Mineralisation

Both project areas are located over greenstone belts of the productive Lower Proterozoic Birimian Shield. The Kokoumbo permit within the Toro JV is located on the same belt that hosts Newcrest's Bonikro and Endeavour Mining's Agbaou gold operations. The Boundiali permit is located south in the same belt as the Tongon (Randgold Resources) and Syama (Resolute Mining) operations.

Toro JV – Activities

Work to date of the Toro JV tenements by Predictive and Toro has surface geochemical sampling and geological mapping.

In the **Kokoumbo permit**, soil, lag, rock chip and trench sampling has been concentrated around an area of artisanal workings, which has defined a 6km by 2km WNW trending gold in soil anomaly, with peak values up to 3.4g/t Au. This anomaly is oriented parallel to known major structures, and may be localised along a faulted contact between granites and mafic volcanic rocks.

A second anomaly of some 2km² occurs over the historic Kokoumbo Hill workings, with

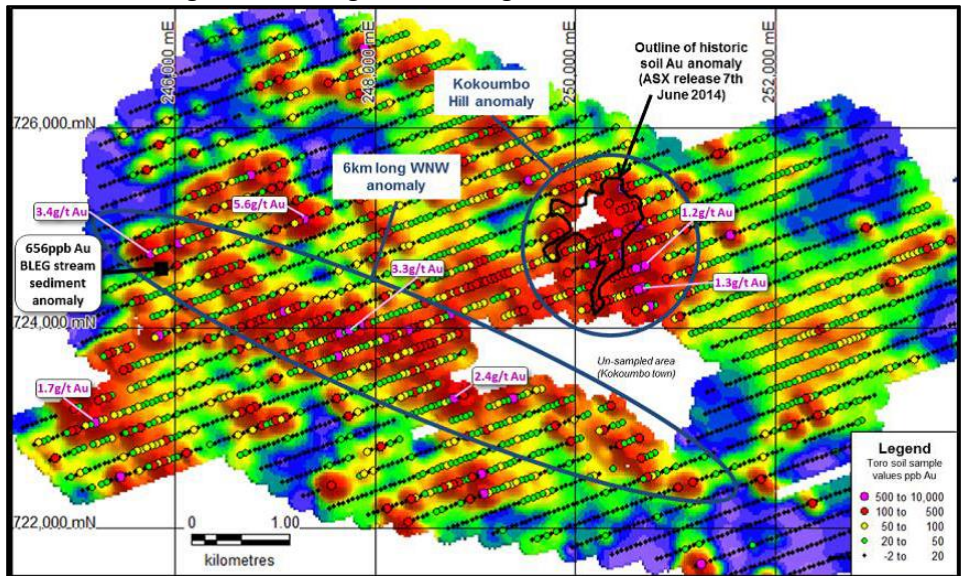
Work over the Toro JV has returned excellent surface sampling results



follow up trenching returning up to 44m @ 3.8g/t Au – as shown in the following figure.

Kokoumbo area gridded soli, lag and laterite gold results

Large areas of gold anomalism defined at Kokoumbo



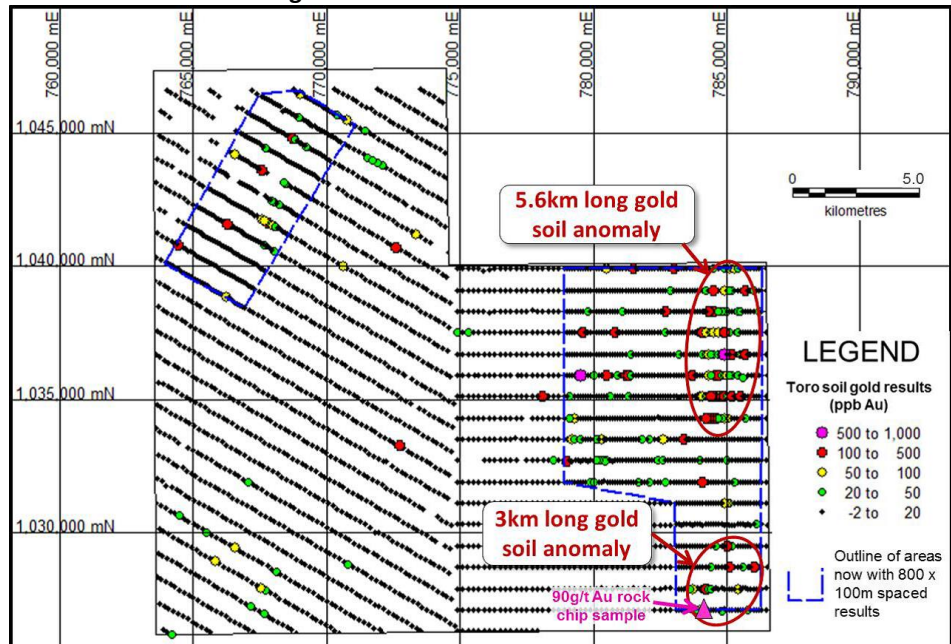
Source: Predictive Discovery

Likewise, surface geochemical sampling over the **Boundiali** licence defined a 5.6km long north-trending anomaly in the NE of the tenement. The initial soil sampling was tenement wide on a 800 x 200m spacing, and followed up BLEG stream sampling previously completed by Predictive. Subsequent infill soil sampling has confirmed the anomalies.

Due to lack of outcrop over the main anomaly no rock chips were collected, however outcrop samples from other areas have returned up to 90g/t au, as shown in the figure below.

Boundiali licence surface geochemical results

5.6km long gold anomaly at Boundiali



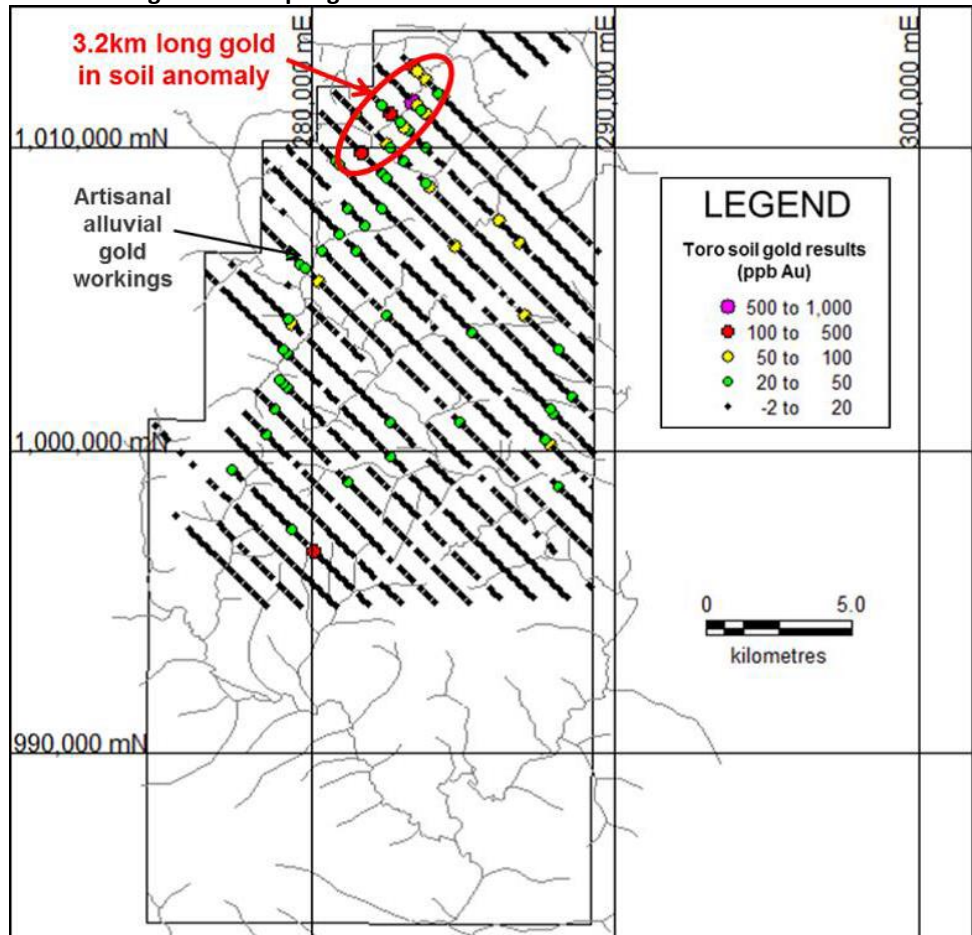
Source: Predictive Discovery

Toro has completed a 800m x 200m spaced soil sampling survey over the **Ferkessedougou permit**, with this defining a 3.2km long +50ppm northeast trending soil anomaly as shown in the figure below, and which now require follow up sampling.



Ferkessedougou soil sampling

Soil sampling at Ferkessedougou has defined a 3.2km long soil anomaly



Source: Predictive Discovery

Future Work – Toro JV

Ongoing work, including drilling, planned for the Toro JV

Toro is continuing its active field programmes over the JV tenements, which will include infill soils sampling over key anomalies. In addition RAB and diamond drilling is expected to commence over the Kokoumbo tenement in the March 2016 quarter.

XMI Agreement – Previous Work

Previous work over the XMI agreement area has returned very positive results, including high grade and/or broad drilling intersections

The XMI Agreement covers areas that have had extensive previous work, including surface geochemical sampling, geological mapping and drilling (569 RC and 11 diamond drillholes). The key Wendene permit, which is expected to be granted shortly, covers the Bobosso mineralised system, which has returned very good results from the previous work.

Drill intersections, largely from 200m spaced lines, include 5m @ 20.6g/t Au from 48m and 35m @ 1.6g/t Au from 65m amongst others, and soil sampling has defined a 7km² anomaly with an arithmetic average value of 0.4g/t Au – this is a high for gold in soil sampling, with a peak value of 39.8g/t Au.

The Company has stated that the area contains a number of different mineralisation styles and lode positions, and that areas of the gold in soil anomaly are yet to be tested by drilling. In addition there are a number of other anomalies in the tenement that are yet to be tested.

The Bassawa and Wendene tenements had been previously held under a single tenement that was granted to Equigold in 1997. This then passed to Lihir Gold and then

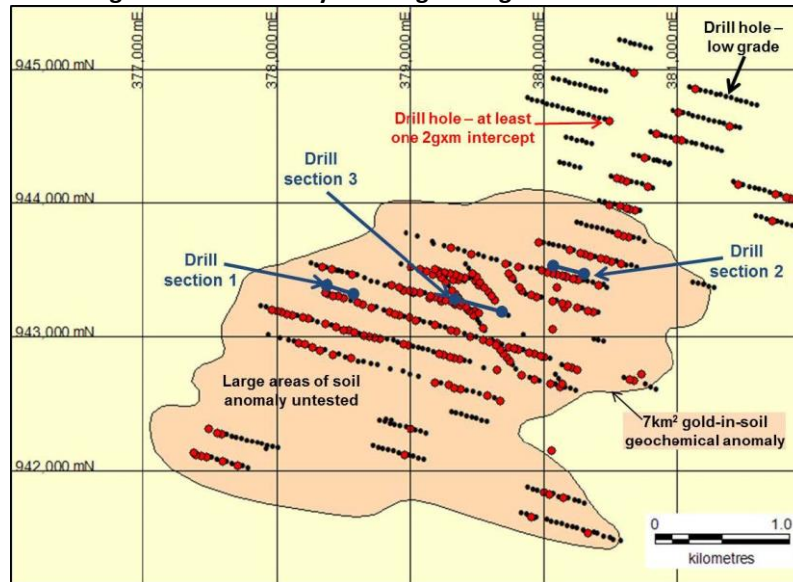


Newcrest Mining due to the various mergers between the companies.

The agreement area is well served by infrastructure, however only few villagers farm or live directly on the main soil anomaly, and past relationships between explorers and locals were very good.

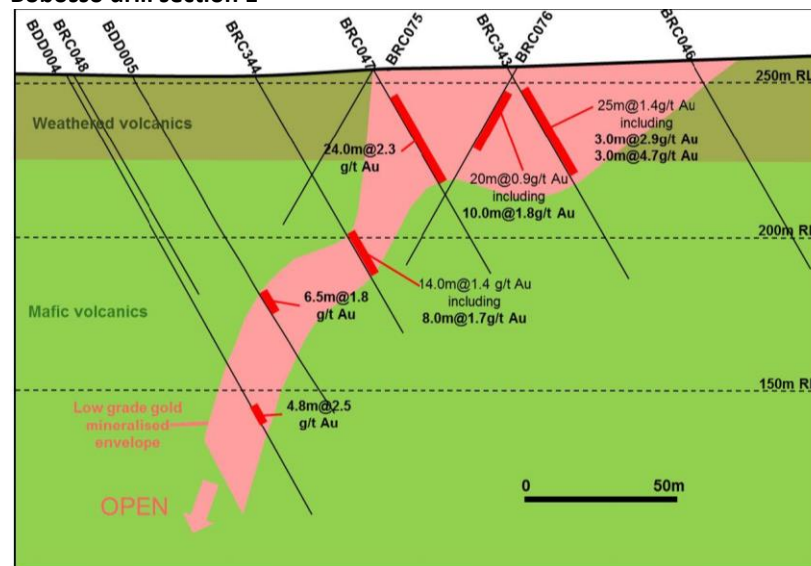
Bobosso gold in soil anomaly showing drilling

Key target is the 7km² Bobosso mineralised system



Source: Predictive Discovery

Bobosso drill section 1



Source: Predictive Discovery

Future Work – XMI Agreement

Subject to meeting the initial capital raising requirements, initial work will include geological mapping and relogging of drill chips and core from the main Bobosso mineralised area. In addition other anomalous areas will be followed up with all work to be used in planning of future drilling programmes.

Metallurgical testwork is also planned to be carried out on shallow mineralised material.

High priority targets will then be drill tested depending upon the availability of funding.

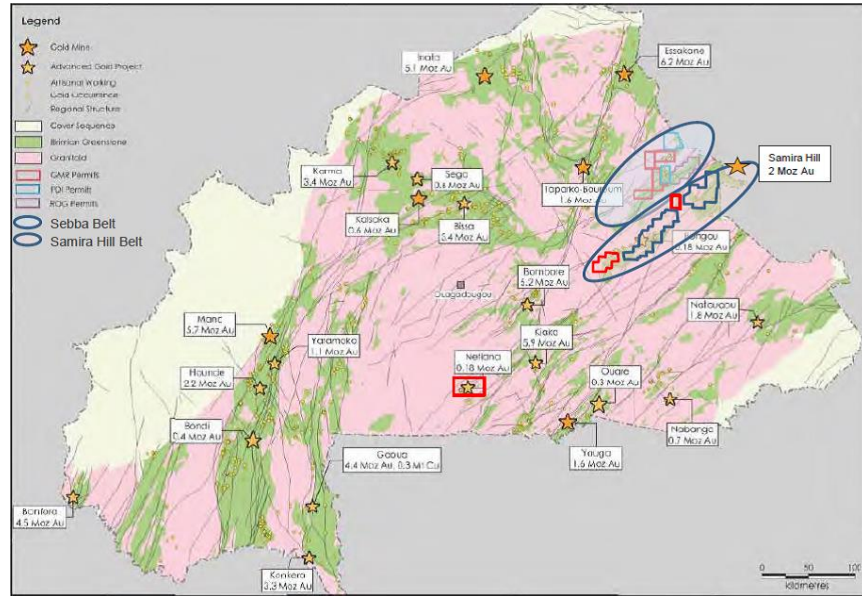


Burkina Faso – Predictive Discovery and Golden Rim

Between them Predictive and Golden Rim control most of the Lower Proterozoic Samira Hill Greenstone Belt in eastern Burkina Faso.

Predictive and Golden Rim control most of the Lower Proterozoic Samira Hill Greenstone Belt in eastern Burkina Faso. The combined ~1,700km² tenement package is along strike from the +2Moz Samira Hill Mine in neighbouring Niger, which operated from 2004 to 2013, before Semafo (TSX: SMF) sold its 80% interest to Sopamin, the Niger state-owned mineral development organisation.

Burkina Faso tenements



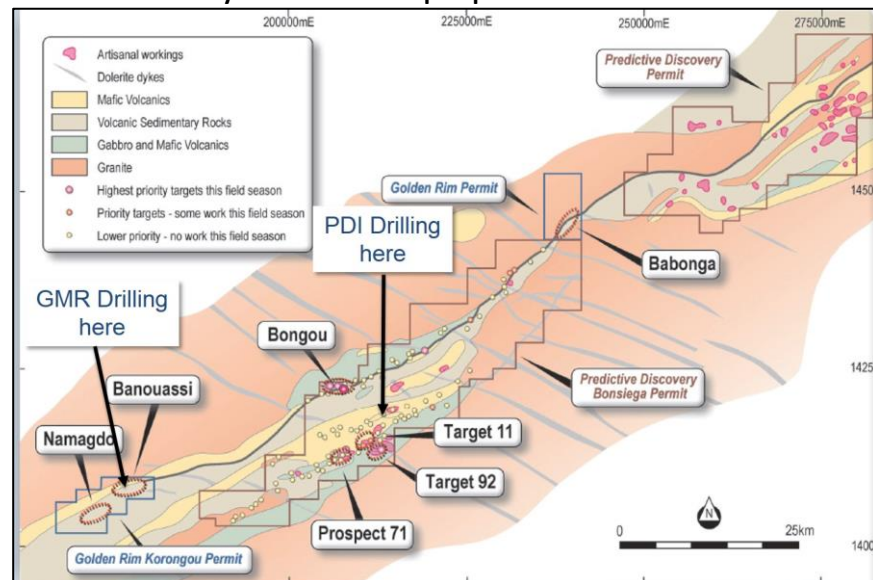
Source: Aurora

Geology and Mineralisation

The Samira Hill greenstone belt is within the Lower Proterozoic Birimian Shield, a prolific gold producer

The Samira belt is one of the constituent greenstone belts of the productive Lower Proterozoic Birimian Shield, host to a large number of producing gold deposits throughout West Africa, including a number in Burkina Faso. The greenstones within the NE striking Samira belt are dominated by gabbros, mafic volcanics and volcanic derived sediments, and the belt is crosscut by a series of NW trending dolerite dykes.

Predictive Discovery and Golden Rim prospects – Samira Hill belt



Source: Aurora Minerals



The belt is marked by a large number of artisanal workings, with orogenic-style gold mineralisation being delineated within the tenements; Predictive Discovery has an 184,000oz, 2.58g/t Indicated and Inferred Resource at its Bongou prospect within the 75-100% held Bonsiega Project. Predictive has also recently reported an Exploration Target of 460,000 to 563,000oz at between 1.5 and 1.7g/t gold within 10km of Bongou. Golden Rim has reported an exploration target of 500,000 to 611,000oz at between 1.8 and 2.2g/t gold within its 95-100% held Korongou permit, some 40km from Bongou.

Work by both companies has delineated a number of other prospects, including those shown below.

Predictive Discovery - Activities

Introduction

Predictive is concentrating activities within 20km of its 184,000oz Bongou gold deposit

Predictive is concentrating activities within 20km of their Bongou deposit, for which an initial resource was estimated in September 2014. This is located within the Bonsiega Project, which covers some 100km of strike of the Samira Hill Greenstone Belt. Bonsiega is part of a broader 1,605km² regional tenement package held by Predictive.

Following a review of activities in late 2014 (and the Bongou resource estimation), the Company's strategy is to expand the resource base in the vicinity of Bongou, to reach an inventory that would support a profitable stand-alone open cut gold mining operation.

To this end, during the 2014 field season a 3,854m reverse circulation ("RC") and limited aircore drilling programme was completed over eight targets prioritised from an initial list of over 100 that showed Bongou-like geological and geophysical features. Most of these targets had no previous drilling. In addition scout power auger geochemical sampling continued through the season.

Bongou Prospect

Mineralisation at Bongou is hosted within an altered granite

Mineralisation at Bongou is hosted in an intensely silica-albite altered and quartz veined granite within a shear zone between a sheared gabbro to the north and basalt to the south. The deposit is characterised by broad intervals of mineralisation (up to 52m @ 3.2g/t Au) making it amenable to low strip open cut mining.

The shear zone is part of a several hundred kilometre long NE striking interpreted splay off the major Markoye Fault System, the control to a number of major gold deposits, including Bombore (5.2Moz gold) and Essakane (6.2Moz gold).

Geophysically the prospect is marked by a strong east-west structural feature interpreted from the magnetic data – one of the discriminants for the exploration prioritisation.

Bongou JORC-compliant Mineral Resource

| Cut-off | Inferred Resources | | | Indicated Resources | | | Total Resources | | |
|------------|--------------------|-------------|--------|---------------------|-------------|--------|-----------------|-------------|---------|
| | Tonnes (Mt) | Grade (g/t) | Ounces | Tonnes (Mt) | Grade (g/t) | Ounces | Tonnes (Mt) | Grade (g/t) | Ounces |
| 0.4 | 1.21 | 2.54 | 99,000 | 1.33 | 2.13 | 91,000 | 2.55 | 2.32 | 190,000 |
| 0.8 | 1.14 | 2.67 | 98,000 | 1.09 | 2.48 | 86,000 | 2.22 | 2.58 | 184,000 |
| 2.0 | 0.64 | 3.64 | 75,000 | 0.49 | 3.90 | 61,000 | 1.13 | 3.75 | 136,000 |
| 3.0 | 0.34 | 4.68 | 52,000 | 0.28 | 4.95 | 45,000 | 0.62 | 4.80 | 96,000 |

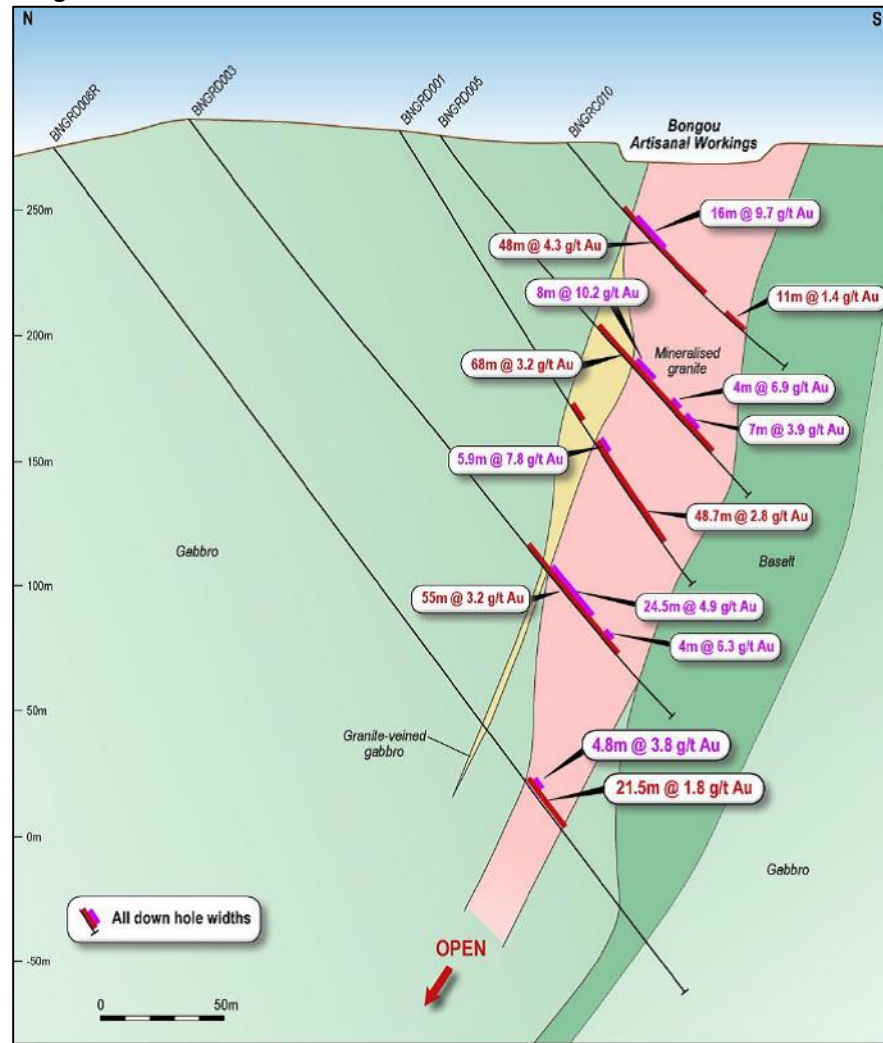
Source: Predictive Discovery

Preliminary cyanidation metallurgical testwork on fresh material at Bongou has returned excellent recoveries of 94% with anticipated short leach residence times.



Bongou is characterised by broad zones of gold mineralisation

Bongou section



Source: Predictive Discovery

Bongou area exploration

Recently completed work in the Bongou area has returned very encouraging results

The recently completed drilling programme has returned very encouraging results, with these, in addition to previous results, being used to estimate an Exploration Target as detailed in the table below. Recent discoveries include Target 92 and Prospect 71, which are detailed further, with mineralisation still being open at these prospects.

The Dave and Laterite Hill prospects, to the ENE of Target 71, were drilled between 2010 and 2012. At Dave mineralisation occurs over a strike of 2.5km, and comprises a series of parallel sub-vertical NE-striking shear hosted lodes, oblique to the main ENE trend of the greenstones. Drilling returned results of up to 28m @ 2.7g/t Au.

Bongou area Exploration Target

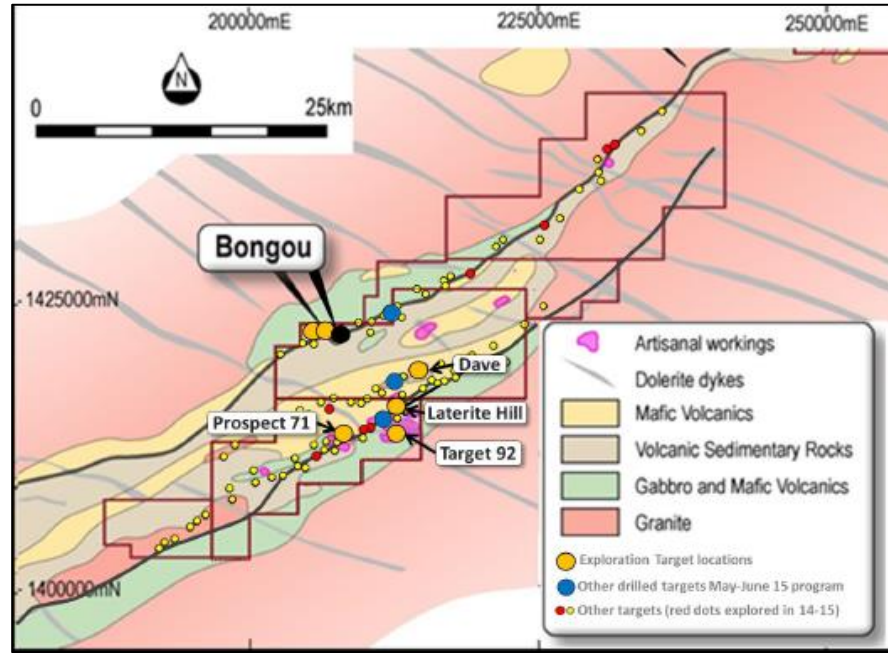
| Exploration Target Area | Tonnage Range (Mt) | | Gold Grade Range (g/t) | | Gold Ounces Range | |
|-------------------------|--------------------|--------------|------------------------|-------------|-------------------|----------------|
| | Lower | Upper | Lower | Upper | Lower | Upper |
| Dave | 6.71 | 7.41 | 1.49 | 1.65 | 322,000 | 394,000 |
| Laterite Hill | 1.48 | 1.63 | 1.62 | 1.79 | 77,000 | 94,000 |
| Near Bongou (W2/W8) | 0.27 | 0.30 | 1.57 | 1.74 | 14,000 | 17,000 |
| Prospect 71 | 0.68 | 0.75 | 1.21 | 1.33 | 26,000 | 32,000 |
| Target 92 | 0.23 | 0.26 | 2.88 | 3.18 | 21,000 | 26,000 |
| TOTAL | 9.37 | 10.35 | 1.53 | 1.69 | 460,000 | 563,000 |

Source: Predictive Discovery

A 460,000oz to 563,000oz Exploration Target has recently been calculated



Location map of Exploration Targets



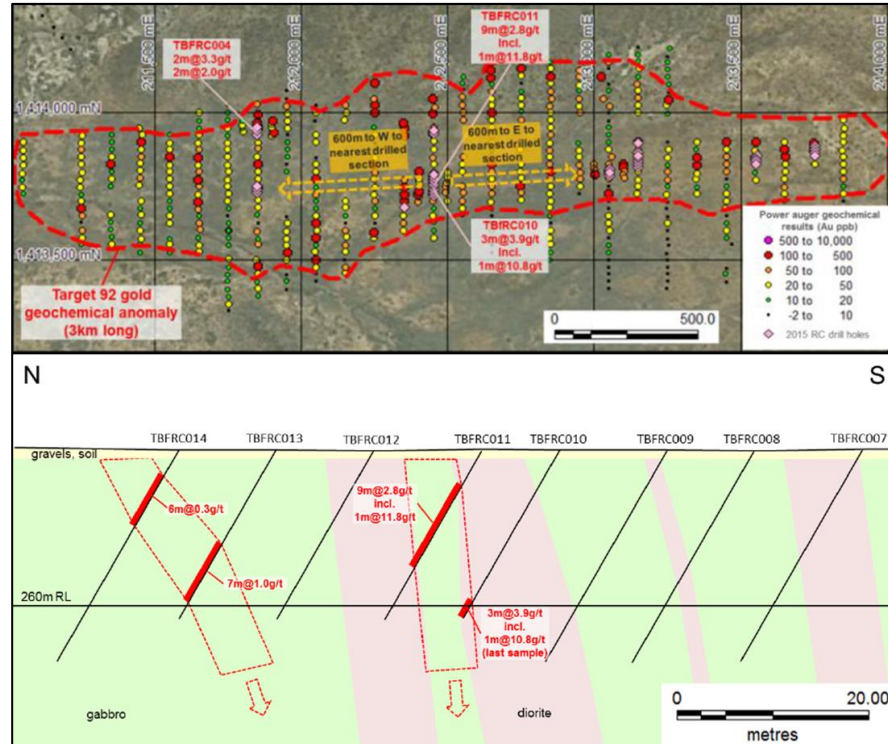
Source: Predictive Discovery

Drilling at Target 92 returned 9m @ 2.83g/t Au

Target 92

This target, located 15km south of Bongou, is marked by a 3km long, east-west trending power auger geochemical anomaly and numerous artisanal workings coincident with an east-west trending structure interpreted from magnetic data. The drilling, on broadly spaced sections, intersected steeply dipping zones of mineralisation, with the strongest mineralisation developed in gabbros near the contacts with diorite dykes. Key intersections are shown in the figure below, and include 9m @ 2.83g/t Au from 4m in TBFR011. Mineralisation remains open in all directions.

Target 92 plan and section



Source: Predictive Discovery



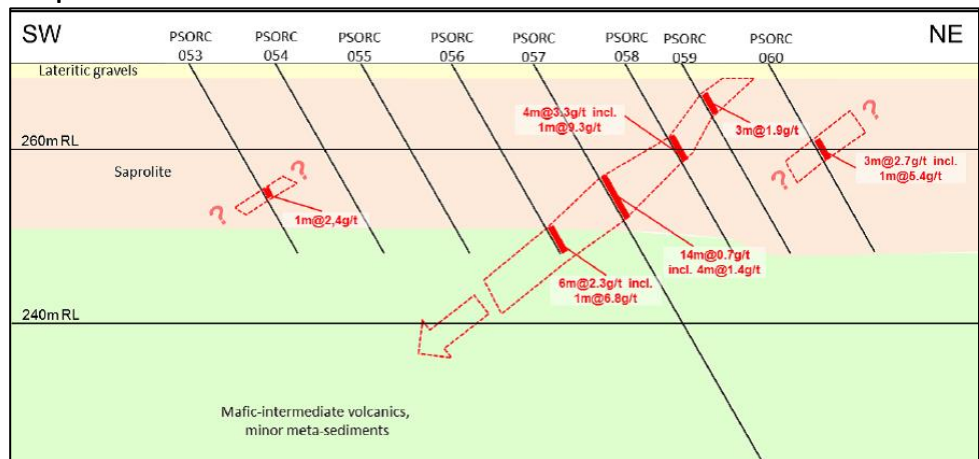
Work at Prospect 71 has identified a new mineralised trend, enhancing the prospectivity

Prospect 71

This is located over a 2.4km² soil anomaly, with 2014 auger sampling and ground magnetics delineating two sub-parallel NW trending structures within the broader anomaly. A 911m drilling programme testing both of these structures was completed in 2015, and returned results up to 6m @ 2.25g/t Au.

The drilling shows a clearly defined shallow SW dipping mineralised zone, with intersections correlating from hole to hole, including a hole from the 2014 drilling programme, which was orientated to test a different structural trend.

Prospect 71 section



Source: Predictive Discovery

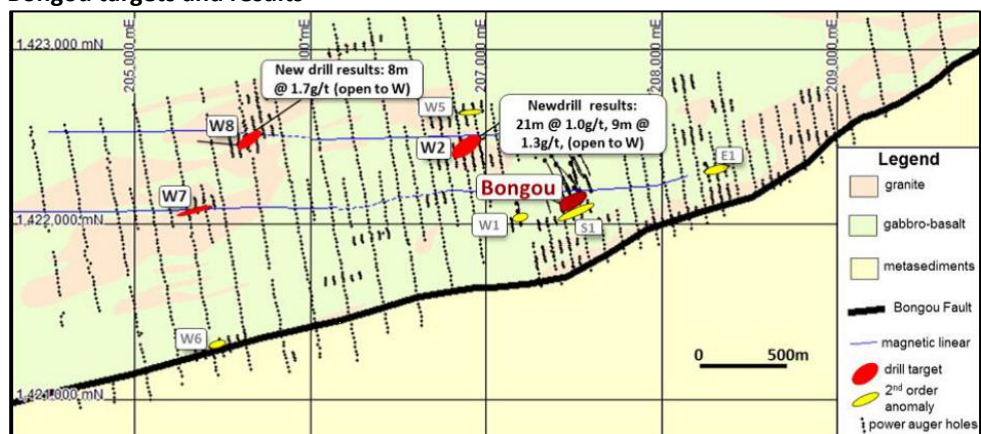
This is a new mineralised trend for the area, and may explain the broad area of anomalism at Prospect 71, and leaves open the possibility for the discovery of more similarly orientated zones at this prospect.

Other Targets

Encouraging results were returned from a number of the other targets, including Target W2, within 600m of Bongou, with one hole returning 21m @ 1.0g/t Au in granite. This was drilled into an ENE trending shear, with this interpreted as being open for 150m to the west.

Bongou targets and results

Drilling closer to Bongou has returned promising results



Source: Predictive Discovery

Future Work

The Company is has recently commenced their 2015/2016 field season exploration programme, following the wet season. Subject to funding, this will include drilling on the prospects with an Exploration Target to enable Mineral Resources to be estimated.



Predictive has farmed out its other projects

Excellent results from the Kokoumbo Permit in the Cote D'Ivoire

Golden Rim is concentrating activities at Korongou, 40km from Bongou

It is actively divesting its other projects, including selling its 185,000oz Balogo Project for US\$10m

Other Projects

The Company is farming out its other projects, including its 1,533km² Cote D'Ivoire tenement package to Toro Gold Limited ("Toro"), a London based private exploration and development company. Under the terms of the agreement Toro can earn 51% of the project through the expenditure of US\$1 million. This also includes a US\$200,000 payment that has been received by Predictive.

Geochemical sampling currently underway by Toro over the Kokoumbo Permit has returned rock chip and selective quartz vein assay results up to 98g/t gold within broad, high tenor soil geochemical anomalies, with the area being marked by historic gold workings.

The Company has also farmed out EL5434 in Victoria, Australia, to Cape Clear Minerals Pty Ltd ("CCM"), whereby CCM can earn 75% through the expenditure of \$500,000 (including a three hole, 1,000m drilling programme) by the end of the September 2015 quarter.

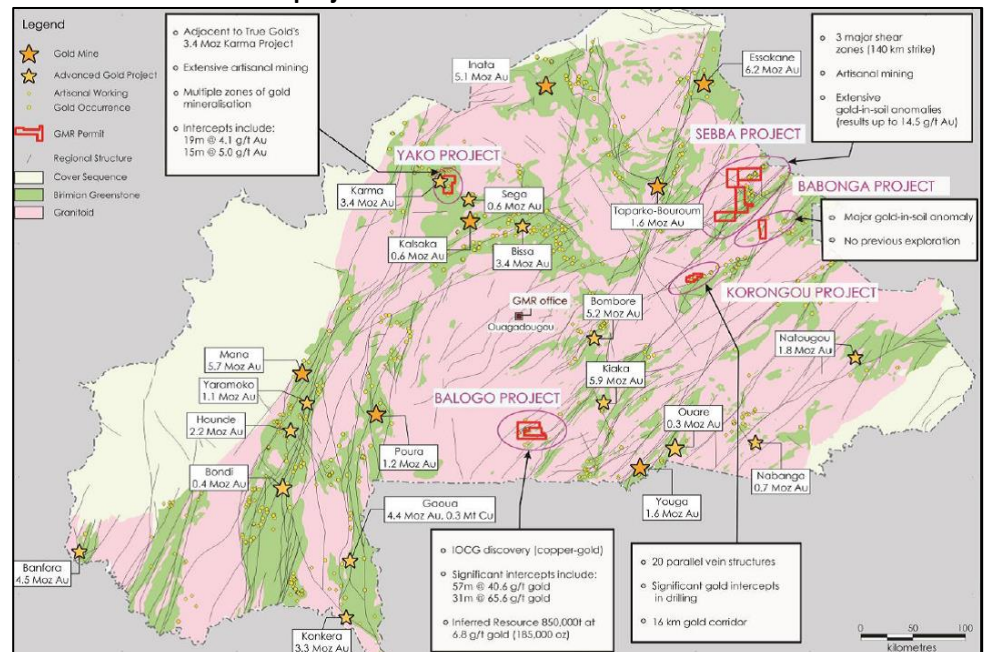
Golden Rim – Activities

Introduction

Golden Rim has concentrated activities on its 90% held Korongou Project, located 40km to the SW of Bongou. Although it has a number of other projects in Burkina Faso and Mali, it is actively seeking to divest them.

This included the 185,000oz Balogo Project, for which an initial US\$5 million payment has been received for the sale to MNG Burkina Sarl ("MNG"). Another US\$5 million is due on meeting milestones; US\$2 million on the earlier of the granting of an exploitation permit or within 24 months of the sale conditions precedent being satisfied or waived, and US\$3 million on commercial production. In addition Golden Rim will receive a 1% Net Smelter Return ("NSR") on production at Balogo – MNG has the right to purchase this for US\$5 million.

Golden Rim Burkina Faso project locations



Source: Golden Rim



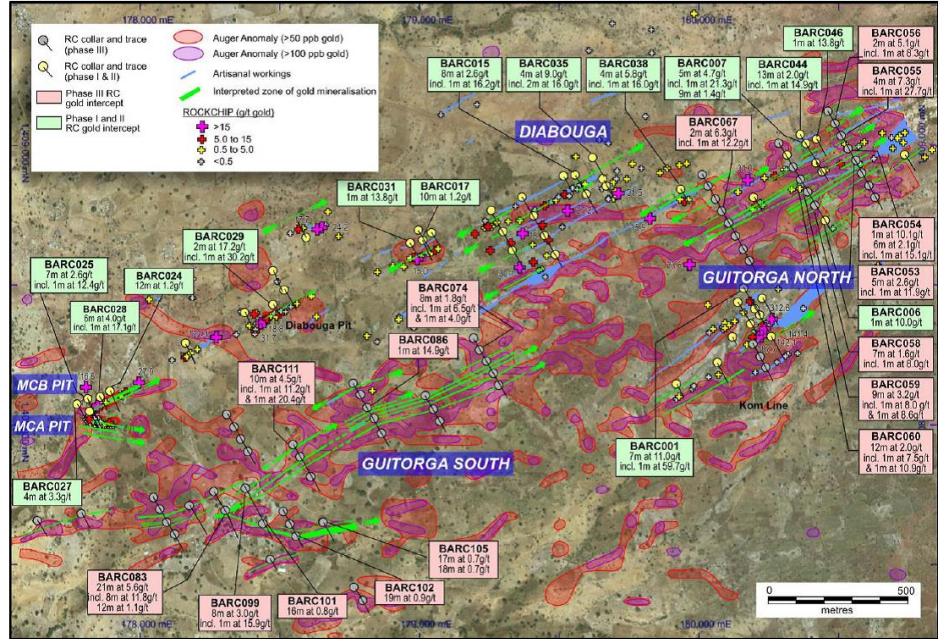
Korongou Project

Work on the Korongou Project has been concentrated on the Banouassi prospect, as shown in the figure below.

During the 2014/2015 field season this included a 65 hole, 7,274m RC drilling programme, which intersected a number of mineralised zones as shown in the figure above. Best intersections included 21m @ 5.6g/t gold from 13m and 12m @ 1.1g/t gold from 51m BARC083. The upper intersection included 8m @ 11.8g/t gold.

Banouassi – drilling results and mineralised zones

Work to date has identified a number of gold zones at the Banouassi prospect



Source: Golden Rim

The area is along the same shear system that hosts Predictive’s Bongou mineralisation, with mineralised zones generally being parallel to the shearing.

The results of this and the previous two phases of drilling were used to prepare an Exploration Target, as presented in the table below.

Korongou Project Exploration Target estimation

Results have been used to prepare a 500,000-611,000oz gold Exploration Target

| Exploration Target Area | Tonnage Range | | Gold Grade Range (g/t) | | Gold Ounces Range | |
|-------------------------|------------------|------------------|------------------------|------------|-------------------|----------------|
| | 90% | 110% | 90% | 110% | 90% | 110% |
| Guitorga North | 2,924,000 | 3,573,000 | 1.9 | 2.4 | 201,000 | 246,000 |
| Guitorga South | 3,643,000 | 4,452,000 | 1.4 | 1.7 | 178,000 | 219,000 |
| MCA/MCB Pits | 719,000 | 879,000 | 1.8 | 2.2 | 47,000 | 57,000 |
| Diabouga | 669,000 | 818,000 | 3.0 | 3.7 | 73,000 | 89,000 |
| TOTAL | 7,954,000 | 9,722,000 | 1.8 | 2.2 | 500,000 | 611,000 |

Source: Golden Rim

A number of these zones are open along strike; in addition there is a 900m gap between Guitorga South and Guitorga North due to the ground being held by another party – this shows scope to expand the Exploration Target should Golden Rim be able to farm in to or acquire this block.

Future Work

Work for the upcoming field season is planned to include drilling, metallurgical testwork and resource modelling to test the validity of the Exploration Target and to potentially estimate an initial Mineral Resource for Korongou.



There are obvious logistical and financial synergies in consolidating the Burkina Faso activities of Predictive and Golden Rim

Synergies and Consolidation?

Given their proximity to each other, there are natural synergies in any consolidation of activities of Predictive and Golden Rim. Such synergies should lead to a reduction of overheads in-country, with both companies now concentrating activities on this belt.

Also, given that both companies have identified either Resources or Exploration Targets in their respective tenements, a consolidation of activities could also lead to a higher probability of an initial Resource being estimated that would meet our hurdle of at least 1 to 1.5 million ounces that we believe needs to be delineated to consider a stand-alone development opportunity.

The companies have a history of co-operation – in October 2014 they, along with TSX-listed Roxgold Inc., consolidated their tenements in the Sebba Greenstone Belt, immediately to the north of the Samira belt in order to make it a more attractive package for joint venture partners.

South Korea – Peninsula Mines

The third investment is a 37.5% controlling stake in Peninsula, which has two projects in South Korea, the Daewha Mo/W and Osu base and precious metal projects.

Daewha Mo/W Project

The main focus to date has been the 100% owned Daewha Mo/W Project, which includes the historic Daewha and Donsan underground mines and is on a granted Mining Lease. The mines operated semi-continuously from 1904 to 1984, and it is believed they closed due to low commodity prices.

Vein mineralisation is in the form of narrow, high grade, generally steeply east dipping scheelite (tungsten) and molybdenite bearing veins, which have been recognised over a strike length of 520m, and are still open down dip. Historical workings extend the strike potential of the mineralised system to over 1Km.

South Korean project locations



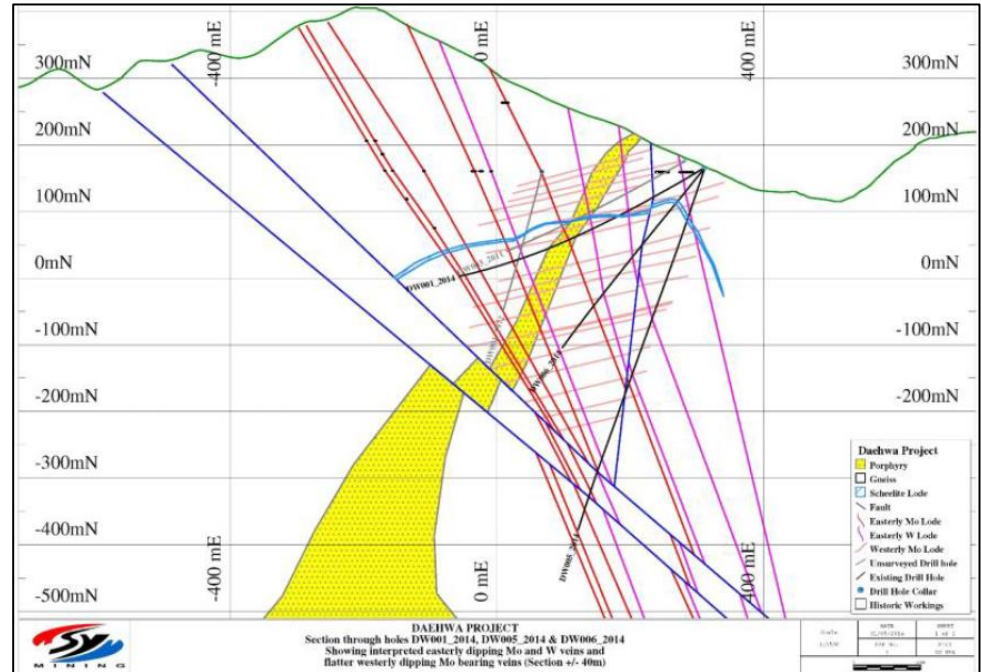
Source: Aurora Minerals



Work to date has targeted the down dip extensions of the historically mined steeply east dipping lodes, however shallowly west dipping lodes have also been recognised. Skarn mineralisation replacing metamorphosed sediments with high tungsten grades has also been reported providing an additional exploration target. Peninsula drilled six diamond holes in 2014, which intersected a number of narrow (up to 0.2m), high grade molybdenum (up to 13.09% Mo) and tungsten (up to 4.42% W) veins.

Narrow, high grade Mo/W veins at the historic Daewha mining centre

Daewha cross section



Source: Peninsula Mines

Peninsula has received welcome drilling assistance through funding by KORES, the state owned mining and investment agency (with which it has a strong relationship), and currently has a two hole, 1,000m diamond drilling programme in progress.

Depending upon the results of the programme, and given the relatively low cost operating environment, Peninsula may look at the feasibility of a small, high grade underground mining and processing operation to supply tungsten and molybdenum to the high-tech South Korean steelmaking industry. The results of the drilling will also be used to estimate an initial JORC-compliant Resource.

Osu Base and Precious Metals

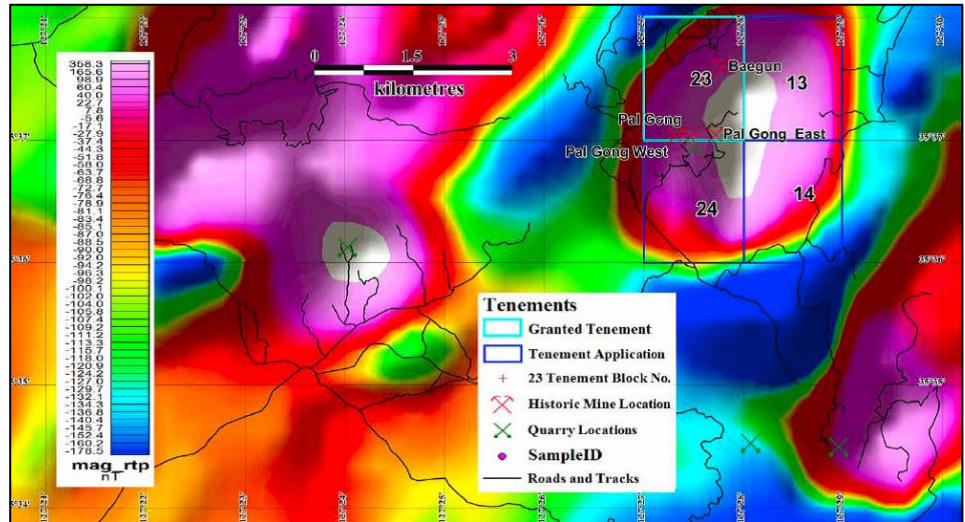
Conceptual porphyry target at Osu

The second project is Osu, which comprises one granted tenement and three applications. Rock chip and dump sampling by the Company has returned high grade precious and base metals assays from poly-metallic veins, interpreted as sub-epithermal veins sourced from a deeper porphyry source. Two mines, Baegun and Pal Gong operated intermittently from before WWII to the 1970's.

Airborne magnetics surveying completed in 2008 and reprocessed in 2014 delineated a magnetic high that may reflect an intrusive source at a depth of around 300-400m at Osu. This is being considered as a porphyry target, and which Peninsula plans to drill. To this end an application has been made for a 9 hole, 3,000m drilling programme, which will also test down dip extensions of the historically mined lodes.



Osu tenement location and magnetics image



Source: Aurora Minerals

Australian Assets

Aurora has a number of 100% held and joint ventured base metal and manganese prospective tenements in the Gascoyne region of Western Australia. These projects are currently inactive, with Aurora considering options with regards to them.

Breakaway's View

Exploration work to date over the Samira Hill Greenstone Belt has returned very encouraging results. We see a good chance of both Predictive and Golden Rim having exploration success and adding to their resource inventories in the current field season, potentially driving value in these two Aurora investments, which in turn should drive value in Aurora. However, we are aware that West African gold is not the market darling at the moment!

We also note the relatively low grades in the Exploration Targets, however these should contain zones of higher grade material, and the existence of the higher grade Bongou Resource also confirms the prospectivity.

As we have mentioned, we see a good case for consolidation of Predictive's and Golden Rim's activities in the Samira Hill Greenstone Belt. This area is now the main focus of both companies' activities, and any collaboration would have obvious logistical and, given the tight capital markets, in the case of Predictive, financial synergies. This would also increase the chance of reaching the critical 1-1.5Moz minimum resource base that we consider is required to justify any decision to progress towards scoping or feasibility studies.

Results from early stage work thus far over the Toro JV in Cote D'Ivoire have been very encouraging, and point towards the potential for significant mineralisation to be discovered. In addition, the XMI package looks very prospective, with historical exploration results backing this up.

In South Korea, the relationship between Peninsula and KORES is valuable, and in our view could lead to further opportunities being introduced to Peninsula. The existing projects have merit, particularly Osu, by virtue of the potential for high grade mineralisation and the interesting porphyry target.

Golden Rim is cashed up by virtue of the recent sale of its 185,000oz Balogo Resource for



US\$10 million; US\$5 of which was paid during the June quarter and with a further US\$5 million in staged payments on development milestones. Golden Rim's cash position at 30 June 2015 was AUD\$4.85 million including the benefit of the proceeds of the first tranche of the sale proceeds from Balogo.

The recent fully subscribed rights issue has added ~\$1.2 million to Predictive's coffers, which will allow activities to continue on the Burkina Faso and new Ivorian projects. Likewise, Peninsula has improved its cash position, and reduced debt to Aurora through the recent placement, with the issue of shares above the 15% placement limit being approved at the recent AGM.

Aurora is also well cashed up and in a reasonable position to help further fund Predictive and Peninsula should they so require, and/or to explore other growth opportunities.

With the Company trading at a ~58% discount to NTA (and ~13% to cash), and the prospectivity of the ground held by associated companies, we rate Aurora as a SPECULATIVE BUY. Price movers will be exploration success by associate companies.

*We rate Aurora as a
SPECULATIVE BUY*



Directors and Management

Non-Executive Chairman **Phillip Jackson**

Phillip is a barrister and solicitor with significant legal and international corporate experience, specialising in the areas of commercial and contract law, mining and energy law and corporate governance. Phillip was formerly legal manager for a major international mining company, and in private practice specialised in small to medium resource companies.

As Chairman, Phillip is responsible for Aurora's corporate governance stewardship. Phillip is currently a General Counsel of a major Australian oil and gas company. He has been a director of a number of Australian public companies, holds an MBA, and has management experience in administration, finance, accounting and human resources.

Managing Director **Martin Pyle**

Martin is a geologist and a mining industry specialist with over 25 years' experience in the finance and resources industry in Australia. Having worked across a diverse range of commodities and been involved in various ASX listed companies, he has particular expertise in geology, exploration, resource and reserve estimation and feasibility study analysis.

Martin was previously in senior corporate finance roles with prominent Australian stock broking firms where he was responsible for the generation and execution of resources related equity raisings, mergers and acquisitions, corporate advisory and research, as well as resource analysis. Most recently he has provided corporate advisory services to a number of junior resource companies and is Non-Executive Director of Gold Road Resources.

Mr Pyle holds a Bachelor of Science (First Class Honours - Geology) and a MBA.

Non-Executive Director **Peter Cordin**

Peter is a civil engineer with over 35 years' global experience in mining and exploration both at operational and senior management level. He has direct experience in the construction and management of diamond and gold operations in Australia, Fenno-Scandinavia and Indonesia. Since 2006, he served as Managing Director before becoming the Chairman of ASX listed Dragon Mining Limited, playing an instrumental role in turning around the company, creating a successful +60,000oz/year gold producer in Fenno-Scandinavia.

Peter was previously Managing Director of Grant's Patch Mining Limited (100,000 ounce gold per year production) and was Director - Operations of Forsayth NL, responsible for the Group's operations in Australia, including the annual production of 320,000 ounces of gold from five mines. He has also been involved in the development of resource projects in Kazakhstan and New Caledonia.

Mr Cordin is a Non-executive Director of Coal of Africa Limited and Vital Metals Limited.

Tim graduated with an honours degree in geology from UWA in 1993, and worked in senior technical roles for over 12 years with BHP Billiton, Golden Associates and Minara Resources. Tim specialised in resource assessment and was involved in feasibility studies for many resource projects in Australia.

Non-Executive Director **Tim Markwell**

Having completed a Graduate Diploma in Applied Finance and Investment with FINSIA in 2000, Tim worked as a Resource Analyst for a Perth-based broking firm where he completed numerous research reports on Australian mining and exploration companies. Prior to joining the Lion Selection Group, Tim was a Senior Investment Analyst for the LinQ Resources Fund where he was responsible for making investment recommendations on behalf of the fund.

Tim Joined Lion Manager in February 2007 to manage the African funds. Tim became an Executive Director of Lion Manager Pty Limited in September 2012.

Biographies provided by ARM 15 September, 2015



Analyst Verification

We, Grant Craighead and Mark Gordon, as the Research Analysts, hereby certify that the views expressed in this research accurately reflect our personal views about the subject securities or issuers and no part of analyst compensation is directly or indirectly related to the inclusion of specific recommendations or views in this research.

Disclosure

Breakaway Investment Group (AFSL 290093) may receive corporate advisory fees, consultancy fees and commissions on sale and purchase of the shares of Aurora Minerals and may hold direct and indirect shares in the company. It has also received a commission on the preparation of this research note.

Disclaimer

Any observations, conclusions, deductions, or estimates of figures that have been made by Breakaway Research and the Breakaway Investment Group in this report should not be relied upon for investment purposes and the reader should make his or her own investigations. This publication has been issued on the basis that it is only for the information and exclusive use of the particular person to whom it is provided. Any recommendations contained herein are based on a consideration of the securities alone. In preparing such general advice no account was taken of the investment objectives, financial situation and particular needs of a particular person. Before making an investment decision on the basis of this advice, investors and prospective investors need to consider, with or without the assistance of a securities adviser, whether the advice is appropriate in light of the particular investment needs, objectives and financial circumstances of the investor or the prospective investor. Although the information contained in this publication has been obtained from sources considered and believed to be both reliable and accurate, no responsibility is accepted for any opinion expressed or for any error or omission that may have occurred therein.

Breakaway Investment Group

AFSL 290093 ABN 84127962387

T+61293928010

F+61292792727

PO Box H116 Australia Square

Sydney, NSW 2001

Suite 505, 35 Lime Street,

Sydney, NSW 2000